

ISABELLA

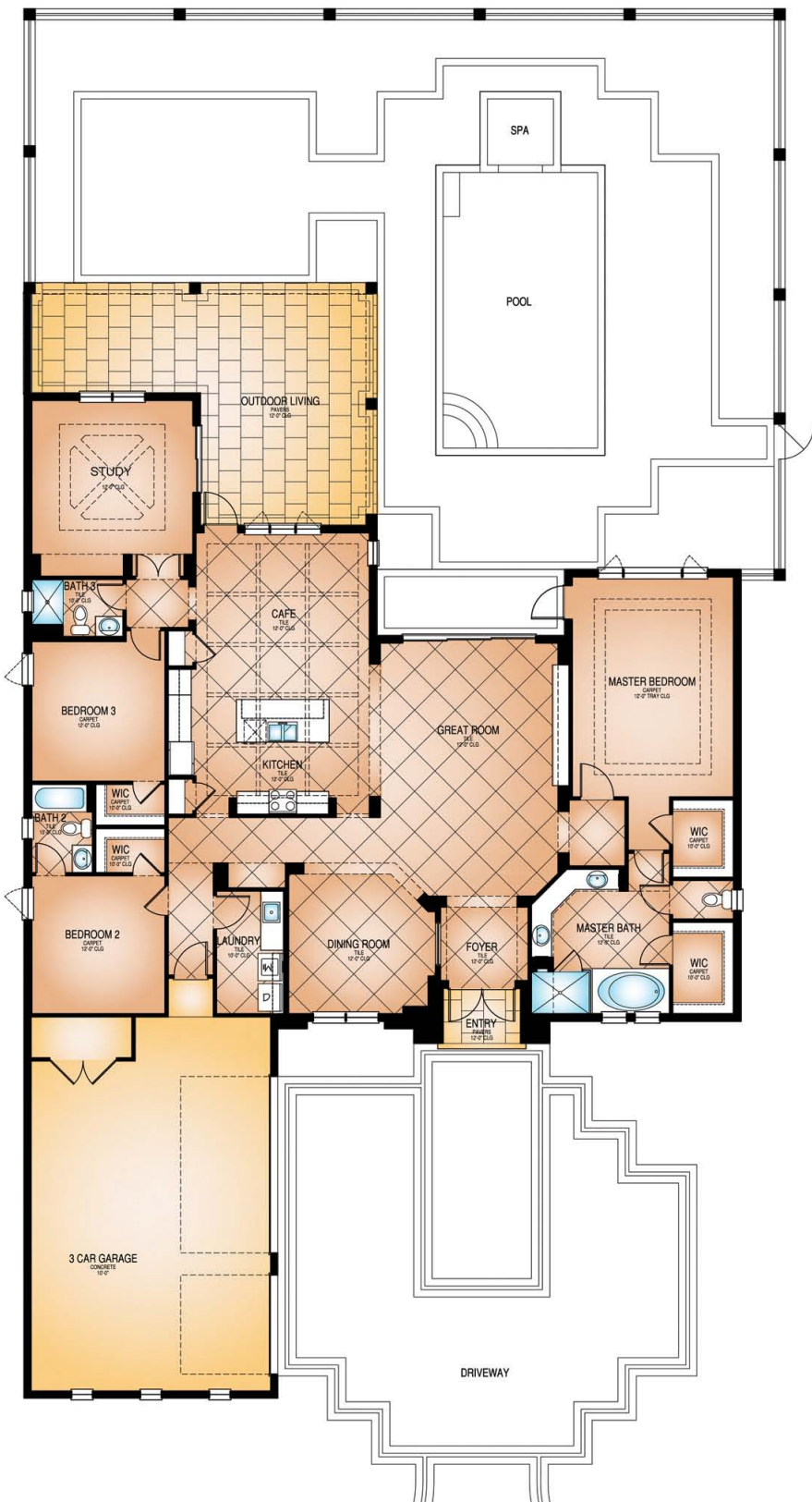
at THE FOUNDERS CLUB

ISABELLA
3 bedroom, 3 bath, study, great room,
cafe area, dining room, outdoor living

Total A/C living	2,879 sq. ft.
3-Car garage	768 sq. ft.
Entry	39 sq. ft.
Outdoor living	614 sq. ft.
Total Sq. Ft.	4,300 sq. ft.

The Isabella is a three-bedroom, three-bath home with 2,879 sq. ft. under air. The Great Room floor plan also includes a den, formal dining room and large master suite that provides access to a spacious outdoor living area with a pool and summer kitchen. The fully furnished model home is available for sale.

The Isabella's interior was conceived and designed by Romanza, London Bay's award-winning in-house design studio. The home's contemporary feel features many emerging trends such as the use of cool backgrounds in flooring, walls and countertops with bright accents of cobalt blue, orange and citrus yellow. The kitchen features polished absolute black granite countertops and clean white cabinets as well as a full height backsplash in sparkling blue pearl granite which creates a backdrop for the sleek stainless steel hood. In the Great Room, a textured faux parquet wall treatment contrasts with the floating custom cabinet's crisp white finish. Throughout, contemporary light fixtures incorporating polished metals and bold custom artwork compliment this striking, yet livable home.



LONDON BAY HOMES

3001 FOUNDERS CLUB DRIVE
SARASOTA . FLORIDA . 34240
941.378.0900
LONDONBAYHOMES.COM



LONDON BAY HOMES

Copyright 2012. London Bay Homes. The photographs, renderings and floor plans represented in these materials may differ from the actual homes and products being offered. Pricing, features, specifications, products and availability are subject to change without notice. See a sales associate for complete and current information.





3206 FOUNDERS CLUB DRIVE . SARASOTA, FL 34240
\$1,123,500—Furnished Model
3 Bedroom, 3 Bath, Great Room, Cafe Area, Dining Room,
Study, 3-Car Garage

